

Cancer cases and deaths from cancer among people with learning disabilities

Scottish

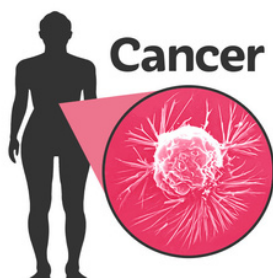
Learning Disabilities

Observatory

Easy read research summary



We looked at information collected in Scotland about cancer in adults with learning disabilities.



Cancer

We looked at how common cancer is in adults with learning disabilities.



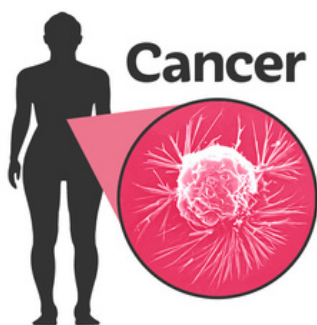
We also looked at how many adults with learning disabilities died from different types of cancer.



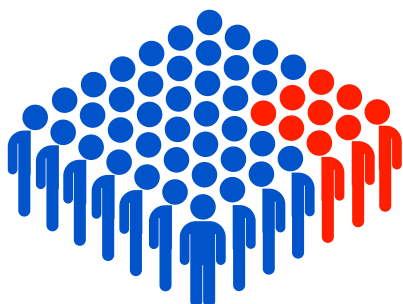


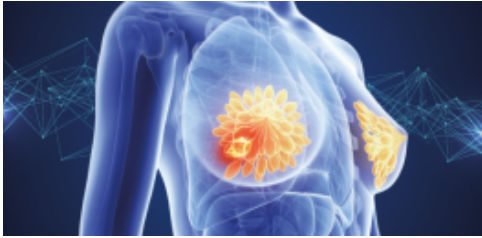
We looked at cancer information between 2011 -2019.

What we found



We found that more adults with learning disabilities died from cancer than people in the general population.

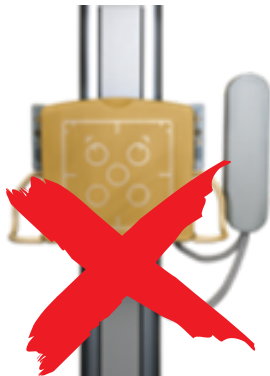




The most common cancers that people with learning disabilities died from were breast cancer and bowel cancer.



This might mean that people with learning disabilities are not accessing cancer screening programmes.





We found that, for lots of adults with learning disabilities, they died from cancer that had spread to different parts of the body.



This meant that we did not know where in the body the cancer had started.



This might mean that the cancer was not found in time to be treated.





Cancer screening is important as it could save the lives of adults with learning disabilities.



It is also important that people with learning disabilities, families, carers and health care professionals are aware of the signs of different cancers.



More information is needed about these signs to help people identify them earlier



Find out more about our research at www.sldo.ac.uk